

# HVAC Motors



Condenser Fan Motor



Direct Drive Motor



Multi-Horsepower Motor



Toll Free: 800-445-4155 • Fax: 631-348-7160

MARS Technical Help Line: 800-678-9888 M-F 8 am - 5 pm EST

# Condenser Fan Motors

## Condenser Fan Motors

JARD replacement condenser fan motors are designed for residential and light commercial HVAC/R applications suitable for either vertical shaft-up or shaft-down mounting. Shell and end shields are enclosed for weather protection. A weep hole is provided in each end shield to allow condensate to drain.



### Features:

- All angle, sleeve or ball bearing
- Rheem mounting holes w/screws
- Reversible rotation
- Thru bolt or band mounting
- Capacitor requirement noted on motor label
- Up/Down design

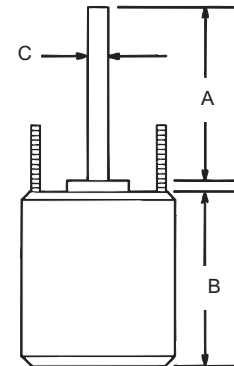
### Specifications:

- Class "B" insulation
- Single phase, 60 Hz
- Thermal overload protected
- Fan duty, continuous air over
- 26 & 36 inch leads



### Cross Reference

| JARD No. | Economaster | Smart Electric | Wagner/<br>Diversitech | Packard | US Motors/<br>Emerson |
|----------|-------------|----------------|------------------------|---------|-----------------------|
| 22403    | EM3403      | -              | -                      | 60825   | 1873                  |
| 22404    | EM3404      | SE3338         | WG840204               | 40825   | 1874                  |
| 22405    | EM3405      | SE3339         | WG840205               | 30825   | 1875                  |
| 22746    | EM3746      | -              | -                      | -       | 1870                  |
| 22727    | EM3727      | SE3727         | WG840727               | 43727   | 1859                  |
| 22728    | EM3728      | SE3728         | WG840728               | 43728   | 1860                  |
| 22729    | EM3729      | SE3729         | WG840729               | 43729   | 1861                  |
| 22730    | EM3730      | SE3730         | WG840730               | 43730   | 1862                  |
| 22731    | EM3731      | SE3731         | WG840731               | 43731   | 1868                  |



### Reversible Rotation - Single Speed

| MARS NO. | HP | VOLTS | AMPS | CAP REQUIRED | ENCL. | BRG. | DIMENSIONS |   |   | LEAD LENGTHS |
|----------|----|-------|------|--------------|-------|------|------------|---|---|--------------|
|          |    |       |      |              |       |      | A          | B | C |              |

#### 1075 RPM

|       |     |         |      |         |      |        |      |      |     |       |
|-------|-----|---------|------|---------|------|--------|------|------|-----|-------|
| 22727 | 1/6 | 208-230 | 0.90 | 5/370   | TEAO | Sleeve | 6.50 | 4.23 | 1/2 | 26"   |
| 22728 | 1/4 | 208-230 | 1.8  | 5/370   | TEAO | Sleeve | 6.50 | 4.23 | 1/2 | 26"   |
| 22729 | 1/3 | 208-230 | 2.4  | 7.5/370 | TEAO | Sleeve | 6.50 | 5.23 | 1/2 | 26"   |
| 22730 | 1/2 | 208-230 | 3.5  | 10/370  | TEAO | Sleeve | 6.50 | 5.73 | 1/2 | 26"   |
| 22731 | 3/4 | 208-230 | 5.2  | 10/370  | TEAO | Ball   | 6.50 | 6.23 | 1/2 | 30.5" |

#### 825 RPM

|       |     |         |     |          |      |        |      |      |     |     |
|-------|-----|---------|-----|----------|------|--------|------|------|-----|-----|
| 22403 | 1/6 | 208-230 | 1.0 | 5/370    | TEAO | Sleeve | 6.50 | 4.23 | 1/2 | 36" |
| 22404 | 1/4 | 208-230 | 2.2 | 5/370    | TEAO | Sleeve | 6.50 | 4.48 | 1/2 | 36" |
| 22405 | 1/3 | 208-230 | 1.9 | 7.5/370  | TEAO | Sleeve | 6.50 | 5.23 | 1/2 | 36" |
| 22746 | 1/2 | 208-230 | 2.8 | 12.5/370 | TEAO | Sleeve | 6.50 | 5.70 | 1/2 | 36" |

Toll Free: 800-445-4155 • Fax: 631-348-7160

MARS Technical Help Line: 800-678-9888 M-F 8 am - 5 pm EST

# Direct Drive Blower Motors



## Direct Drive Furnace Blower Motors

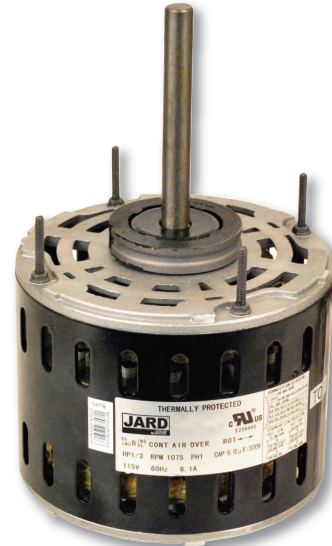
JARD direct drive blower motors are Ideal for use in commercial and residential furnaces and air-conditioners. All models are three speed standard efficiency and are electrically reversible.

### Features:

- All angle sleeve bearing
- Rheem mounting holes
- 3 speeds
- 1/2 inch extended thru bolts
- 2-1/4 inch resilient rings
- 4 inch long, 1/2 inch diameter shaft

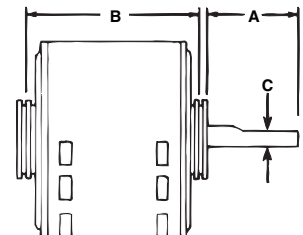
### Specifications:

- Class "B" insulation
- Single phase, 60 Hertz
- Thermal overload protected
- Fan duty, continuous, air over
- Open construction
- 26 & 30 inch leads



### Cross Reference

| JARD No. | Economaster | Smart Electric | Wagner/<br>Diversitech | Packard | US Motors/<br>Emerson |
|----------|-------------|----------------|------------------------|---------|-----------------------|
| 22583    | EM3583      | SE3583         | WG840583               | 43583   | 1863                  |
| 22584    | EM3584      | SE3584         | WG840584               | 43584   | 1971                  |
| 22585    | EM3585      | SE3585         | WG840585               | 43585   | 1864                  |
| 22586    | EM3586      | SE3586         | WG840586               | 43586   | 1972                  |
| 22587    | EM3587      | SE3587         | WG840587               | 43587   | 1865                  |
| 22588    | EM3588      | SE3588         | WG840588               | 43588   | 1973                  |
| 22589    | EM3589      | SE3589         | WG840589               | 43589   | 8904                  |
| 22590    | EM3590      | SE3590         | WG840590               | 43590   | 8905                  |



### 1075 RPM - Three Speed - Reversible Rotation

| MARS NO. | HP  | ROTATION | VOLTS   | AMPS | CAP REQUIRED | ENCL. | BRG.   | DIMENSIONS |      |     | LEAD LENGTHS |
|----------|-----|----------|---------|------|--------------|-------|--------|------------|------|-----|--------------|
|          |     |          |         |      |              |       |        | A          | B    | C   |              |
| 22583    | 1/4 | Rev      | 115     | 4.2  | 5/370        | OAO   | Sleeve | 4.50       | 4.89 | 1/2 | 26"          |
| 22584    | 1/4 | Rev      | 208-230 | 1.8  | 5/370        | OAO   | Sleeve | 4.50       | 4.89 | 1/2 | 26"          |
| 22585    | 1/3 | Rev      | 115     | 6.1  | 5/370        | OAO   | Sleeve | 4.50       | 5.14 | 1/2 | 30"          |
| 22586    | 1/3 | Rev      | 208-230 | 2.7  | 5/370        | OAO   | Sleeve | 4.50       | 5.14 | 1/2 | 26"          |
| 22587    | 1/2 | Rev      | 115     | 7.5  | 10/370       | OAO   | Sleeve | 4.50       | 5.89 | 1/2 | 30"          |
| 22588    | 1/2 | Rev      | 208-230 | 3.2  | 7.5/370      | OAO   | Sleeve | 4.50       | 5.64 | 1/2 | 30"          |
| 22589    | 3/4 | Rev      | 115     | 11.2 | 15/370       | OAO   | Sleeve | 4.50       | 6.14 | 1/2 | 30"          |
| 22590    | 3/4 | Rev      | 208-230 | 4.5  | 10/370       | OAO   | Sleeve | 4.50       | 6.14 | 1/2 | 30"          |

Toll Free: 800-445-4155 • Fax: 631-348-7160

MARS Technical Help Line: 800-678-9888 M-F 8 am - 5 pm EST

# Multi-Horsepower Motors

## Multi-Horsepower Direct Drive Motors



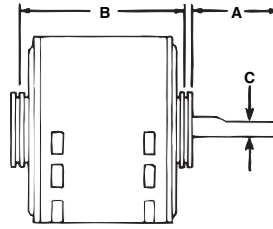
JARD multi-horsepower direct drive blower motors are used in residential and commercial furnaces, air conditioners, exhaust fans, and other air handling equipment installed in clean and dry environments. Four models cover both 115 and 208-230 volt applications from 1/6 through 3/4 HP. All models feature Rheem shell mounting holes.

### Features:

- Rheem mounting holes
- Reversible rotation
- 2-1/4 inch resilient rings

### Specifications:

- Class "B" insulation
- Single phase, 60 Hz
- Thermal overload protected
- 41 inch leads



### Cross Reference

| JARD No. | Economaster | Smart Electric | Wagner/Diversitech | Packard | US Motors/Emerson |
|----------|-------------|----------------|--------------------|---------|-------------------|
| 22463    | EM3463      | SE3463         | WG840463           | 45460   | 5460              |
| 22464    | EM3464      | SE3464         | WG840464           | 45461   | 5461              |
| 22466    | EM3466      | SE3466         | WG840466           | 45470   | 5470              |
| 22467    | EM3467      | SE3467         | WG840467           | 45471   | 5471              |

## 1075 RPM - Four Speed - Reversible Rotation

| MARS NO. | HP        | ROTATION | VOLTS | ENCL. | BRG.   | DIMENSIONS |      |     | LEAD LENGTHS |
|----------|-----------|----------|-------|-------|--------|------------|------|-----|--------------|
|          |           |          |       |       |        | A          | B    | C   |              |
| 22463    | 1/6 - 1/2 | Rev      | 115   | OAO   | Sleeve | 5.50       | 4.73 | 1/2 | 42"          |
| 22464    | 1/6 - 1/2 | Rev      | 230   | OAO   | Sleeve | 5.50       | 4.73 | 1/2 | 41"          |
| 22466    | 1/5 - 3/4 | Rev      | 115   | OAO   | Ball   | 5.80       | 5.73 | 1/2 | 41"          |
| 22467    | 1/5 - 3/4 | Rev      | 230   | OAO   | Ball   | 4.60       | 5.23 | 1/2 | 41"          |

## Multi-Horsepower Condenser Fan Motors

JARD multi-horsepower condenser fan motors are designed for either shaft up or shaft down applications. All motors are suitable for air conditioning or heat pump applications. These motors need to be mounted within the airflow of the fan for proper cooling.

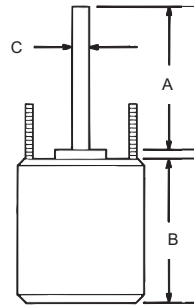


### Features:

- Rheem mounting holes w/screws installed
- Thru bolt or band mounting
- Water slinger on shaft
- Air conditioning or heat pump duty

### Specifications:

- Class "B" insulation
- Single phase, 60 Hz
- Thermal overload protected



### Cross Reference

| JARD No. | Economaster | Smart Electric | Wagner/Diversitech | Packard | US Motors/Emerson |
|----------|-------------|----------------|--------------------|---------|-------------------|
| 22458    | EM3458      | -              | -                  | 45458BF | 5458              |
| 22459    | EM3459      | -              | -                  | 45488BF | 5464              |
| 22465    | EM3465      | SE3465         | WG840465           | 45458B  | 5462              |
| 22468    | EM3468      | SE3468         | WG840468           | -       | 5465              |
| 22469    | EM3469      | SE3469         | WG840469           | -       | 5464              |

| MARS NO. | HP        | ROTATION | RPM/SPEED | VOLTS   | ENCL. | BRG. | DIMENSIONS |      |     | LEAD LENGTHS |
|----------|-----------|----------|-----------|---------|-------|------|------------|------|-----|--------------|
|          |           |          |           |         |       |      | A          | B    | C   |              |
| 22458    | 1/6 - 1/3 | Rev      | 1075      | 208-230 | TEAO  | Ball | 6.50       | 3.82 | 1/2 | 36"          |
| 22459    | 1/8 - 1/3 | Rev      | 825       | 208-230 | TEAO  | Ball | 6.50       | 5.48 | 1/2 | 36"          |
| 22465    | 1/6 - 1/3 | Rev      | 1075/2    | 208-230 | TEAO  | Ball | 5.00       | 4.73 | 1/2 | 38"          |
| 22468    | 1/8 - 1/2 | Rev      | 1075/2    | 208-230 | TEAO  | Ball | 5.00       | 5.48 | 1/2 | 38"          |
| 22469    | 1/6 - 1/3 | Rev      | 825/2     | 208-230 | TEAO  | Ball | 5.00       | 5.48 | 1/2 | 42"          |

Toll Free: 800-445-4155 • Fax: 631-348-7160

MARS Technical Help Line: 800-678-9888 M-F 8 am - 5 pm EST